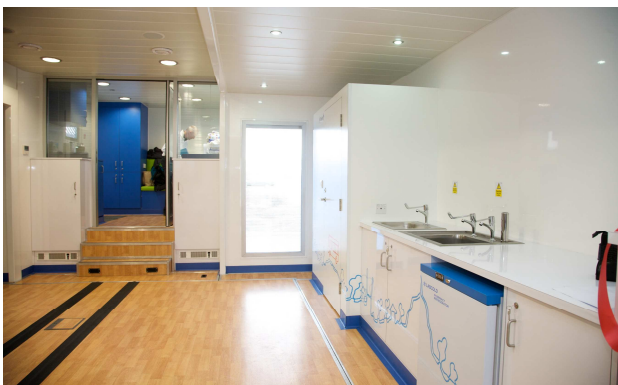


## Case Study

# EMS delivers unique mobile cancer treatment vehicle



### Testimonial

"Finding the right partner for this project was absolutely critical. By taking treatments out of the hospital setting and making sure people can access the cancer support services they need in their local area, we are freeing up their time and money, giving them the reassurance of being treated locally and also freeing up valuable space in hospitals for the NHS."

**Claudia McVie, Chief Executive of Tenovus**

### Campaign Objectives

- Deliver life-saving treatments
- Provide practical support, counselling, screening and prevention cancer services
- Remove the practical and emotional strain of travelling long distances

### Our Response

EMS was responsible for the design and build of a bespoke mobile cancer treatment unit - one of the most complex vehicle builds EMS has ever undertaken. Thanks to a highly flexible internal design, the unit can also be reconfigured to provide a lecture theatre space for the charity to use in its ongoing work to target healthcare professionals in cancer prevention strategies.

### Delivering the Campaign

- EMS designed and project managed the bespoke vehicle build to meet strict NHS standards - on time and on budget
- The 13.6 metre mobile unit provides the space to treat up to three chemotherapy patients at a time; it also includes a private consultation and counselling room, a reception/waiting area and comprehensive facilities such as medical fridges, secure storage and washing/hygiene areas
- The interior has been carefully designed to feel welcoming for patients and their families

### At a glance...

#### Campaign

Mobile Cancer Treatment

#### Dates

Launched Feb 2009

#### Client

Tenovus

#### Vehicle

Voyager

### Results

- It is the first unit of its kind in the UK and will deliver a comprehensive range of mobile cancer treatment and support services across Wales
- EMS will manage logistics on behalf of Tenovus, visiting up to 4 sites per week
- Weekly chemotherapy services have begun in locations in South Wales
- The unit is equipped to treat up to 15 chemotherapy patients per day